



Labstore Instruments LLC

Sampling Devices



P.O.Box # 4729 Antioch, California - 94531 United States of America
E-mail: admin@labstore-instruments.com ♦ Website: www.labstore-instruments.com
Tel. (USA): +1 (925) 219-8586

Sampling Devices

"CORRECT SAMPLING MEANS CORRECT EVALUATION"

The importance of correct techniques cannot be over emphasized for effective quantitative analysis. The Single most important aspect of sampling (other than skills of the person taking samples), is the SAMPLING DEVICE itself. We are proud to have been pioneers in the scientific design and manufacture to high engineering standards, of various types of sampling and measuring devices for the industries producing/handling the following products.

ESTERS	ANIMAL FATS	PETROLEUM OILS
FOOD PRODUCTS	CHEMICALS	PESTICIDES
FATTY ALCOHOLS	DRYING OILS	VEGETABLE OILS
LIQUID FERTILIZERS	EDIBLE SYRUPS	WATER
MARINE OILS	EFFLUENTS	WINE

A brief description of the various types of samplers we supply is given below. We also undertake the design and fabrication of special - purpose samplers to meet client' requirements in Stainless Steel/Brass/Copper/Aluminium/PVC or any other material. These Samplers are easy to clean thoroughly. A swivel arrangement prevents kinking of the attached tape, wire or rope.



Labstore Instruments LLC

"Your one stop for high quality and affordable instruments. We supply instruments tailor-made for your testing and measuring needs, and guarantee your satisfaction."

Labstore Instruments is a manufacturer and distributor of petroleum testing instruments. The company was founded in 1978; our trading partners are the major refineries all over the world, Testing Laboratories, Analysts, Oil Refineries, Universities, and R&D Laboratories. Labstore helps incorporate high quality and affordable instruments in today's leading petroleum testing industry.

VISION

Our vision is to meet and satisfy our customers' needs through our environmental friendly, high quality affordable instruments provide and exceed international standards through value added specialized services.

OUR VALUES

RESPECT - In all our business activities, we accord respects to our customers, our staff, our suppliers and our peers.

INNOVATION - We strive to develop products and services that meet's our customer expectations and the industry requirements.

SUSTAINABILITY - We make business decisions that respect safety and the environment.

RESULTS - We do not accept complacency, we take responsibility for our own performance and use teamwork for the best outcomes.

COMMITMENT - We respond to the needs of our customers and go the extra mile to deliver great service.

RELIABILITY - We are there when you need us!

INDEX

NAME	PAGE NOS.
All Level Sampler -----	1
Bottom Sampler -----	2
Flushing Case Assembly (Thermometer Holder Liquid) Sampler -----	3
Drum/Wagon Sampler (Liquid) -----	4
Drum Sampler (Semi Solid) -----	5
Bottom Liquid Sampler (Heavy) -----	6
Bottle Type Sampler -----	7
Dimensions Clear Bottle-500ml -----	8
Clear Bottle-500ml -----	9
Glass Bottle-100ml (Amber) -----	10
Glass Bottle-200ml (Amber) -----	12
Sealing wire,SamplingCANS(UN approved,Seamless bladder for Gas sampling, Gas Sampling Bomb -----	14
Oil / Water finding Paste, Dip Tape, Dip Rod -----	15

All Level Sampler



SPECIFICATIONS

MODEL	LS - ALL - 01	LS-ALL-02
HEIGHT	300mm (Nominal)	300mm (Nominal)
DIAMETER	75mm	60mm
CAPACITY	850ml	450mm

(Material of Construction)

ORDER CODE

(Material of Construction)	ORDER CODE	ORDER CODE
STAINLESS STEEL	883800	883802
BRASS	883810	883812
COPPER	883820	883822
OTHER THAN ABOVE	883830	883832

OPERATION : When the sampler is lowered into a liquid product the bottom valve will open due to pressure of the liquid against the descending Sampler. The product will pass through the Sampler and on being fully immersed, the top lid will open to allow trapped product to flow out and permit fresh product from lower layer to be collected. When you keep the sampler steady at certain level, then only the valve and the top lid close trapping the product inside the Sampler from the particular section (level). When the Sampler is pulled up, due to back pressure of the product, the lid and the valve will be tightly closed and no interchange of product will arise, so that you can get representative sample of the product. With the help of this Sampler you can get a sample of liquid product from any desired level (depth) from Ship/Shore / Lorry / Wagon tanks. By taking sample of the product from bottom to top from different level you can have a composite sample. By doing this you can also find about the uniformity in the quality of the product at various levels of the tank.

USES : For obtaining a sample of liquid chemical or Petroleum product from "any-level" of Storage tanks / Shore / Lorry / Wagon.

MAINTENANCE : After every operation see that the Sampler is cleaned, washed, rinsed properly. It is constructed in such a way that it can be unscrewed and dismantled in to 3 pieces. (Top, Middle & Bottom sections). The valve site on the bottom section and more attention should be given to this section to keep it clean from dirt or any other foreign particles.

Bottom Sampler



SPECIFICATIONS

MODEL	LS-BS-01	LS-BS-02
HEIGHT	300mm (Nominal)	300mm (Nominal)
DIAMETER	75mm	60mm
CAPACITY	1000ml	600ml

(Material of Construction)

ORDER CODE

(Material of Construction)	ORDER CODE	ORDER CODE
STAINLESS STEEL	990900	990902
BRASS	990910	990912
COPPER	990920	990922
OTHER THAN ABOVE	990930	990932

OPERATIONS : The valve of this Sampler will open only when it touches a hard surface of a tank and it will get sample of the liquid product from that strata / location. This Sampler is very useful to get an exclusive Bottom sample of the liquid product which will enable to detect any sediments or contamination in the product.

OPTIONAL ATTACHMENT : Extension rods of Size: 1, 2, 3 and 6 (Sets of 4 pieces are available, which will enable to get Bottom sample of the product from 1 to 12 inches from the bottom. The extension rods are threaded and can be fixed to the valve rod.

USE : For obtaining bottom samples of chemical or petroleum products from Ship / Shore / Lorry / Wagon tanks.

MAINTENANCE : The Sampler is very easy to clean and be dismantled into 3 pieces. All the 3 pieces are threaded and joined together the bottom piece where the valve rests should be kept clean after every use to prevent any accumulation of dirt or sludge on the valve seat.

FLUSHING CASE ASSEMBLY (THERMOMETER HOLDER LIQUID SAMPLER)



SPECIFICATIONS

MODEL	LS-TM-01
HEIGHT	300 mm (Nominal)
DIAMETER	60 mm
CAPACITY	200 ml

(Material of Construction)

ORDER CODE

PVC CUP + SS STEM	110500
PVC CUP + BRASS STEM	110510

OPERATIONS : When this Sampler is lowered in to a liquid product in a Shore / Ship / Wagon / Lorry tank, due to the pressure of the liquid against the descending Sampler, the valve will open and the product will pass through the Sampler. When the Sampler is fully immersed, the top lid will open to allow trapped product to flow out and permit fresh product from lower layer to be collected. When the instrument is kept stationary, then only both the valve and the top lid will close trapping the product inside from that particular strata, where it was held stationary. The main advantage of this instrument is in its construction. The Cup is made out of PVC material which is a bad conductor of heat. When the product is raised from the bottom of a Tank (which is having lower / cold temp.) to Top (which is normally hot) the temperature of the trapped product inside the Cup will not change with the ambient condition.

USE : For obtaining temperature of liquid products to convert volumetric quantity into weight based on density of product. This Sampler consists of stainless steel holder for thermometer and the Cup is a PVC material. This PVC Cup is like insulation and hence will get an accurate temperature of the liquid product from any desired depth irrespective of a change in temperature at different levels (subject to standard thermometer accuracy).

MAINTENANCE: The top and bottom of the Cup is threaded and joined together. After every use, clean the cup thoroughly, See that the valve and the valve seat are free from dirt and any other foreign particles. Insert the thermometer by unscrewing the cap at the top.

DRUM/WAGON SAMPLER (LIQUID)



SPECIFICATION	DRUM SAMPLER	WAGON SAMPLER
MODEL	LS-DS(L)-01	LS-WS-01
HEIGHT	900 mm	2,300 mm
DIAMETER	32 mm	32 mm
CAPACITY	600 ml	1,400 ml

(Material Of Construction)	ORDER CODE	
STAINLESS STEEL	220300	220302
BRASS	220310	220312

OPERATION - There are two functions of this sampler. One function is to get complete composite (Top to Bottom) sample and the other function is to get TMB sample from Drums or Wagons. When you require a composite (complete cross section from top to bottom) sample, you have to lift the valve rod only before sending the Sampler through the opening in a drum/wagon. As the Sampler goes down the liquid will fill in and you have to close the valve rod only when the Sampler reaches/touches the bottom of the drum/wagon. Now pull the sampler up and empty the sample by lifting the valve rod. When you require Bottom or Middle (TMB) sample then you have to lower the Sampler into drum/wagon with the valve in closed position. When the Sampler reaches the desired position (say bottom or middle) then slowly lift the valve rod 2" or 3" up and immediately the liquid from that particular position will fill inside the Sampler. Now push back the valve rod (i.e. close the valve) and lift the Sampler which contains the liquids the liquid sample.

USES - For obtaining liquid samples like chemicals or petroleum products from Drums/Truck/Tankers/Wagon.

MAINTENANCE - After every operation see that the Sampler is cleaned, washed, rinsed properly by unscrewing the cap at the top.

DRUM SAMPLER (SEMI SOLID)



SPECIFICATION

MODEL	LS-DS (S) - 02
HEIGHT	900 mm
DIAMETER	32 mm

(Material of Construction)

ORDER CODE

STAINLESS STEEL	330100
BRASS	330110

OPERATIONS: As the Sampler goes inside the drum the product will enter the Sampler and simultaneously it pushes the valve rod upwards. Once the Sampler is filled with the product, remove the Sampler from the drum and empty it by pushing the valve rod downwards. The valve rod acts like a pusher (plunger type).

USES: For obtaining samples like wax, salfat, molasses from a drum of capacity upto 205 lts.

MAINTENANCE: After every operation see that the Sampler is cleaned, washed, rinsed properly by unscrewing the cap at the top.

BOTTOM LIQUID SAMPLER (HEAVY)



SPECIFICATION

MODEL	LS-BS (H) - 02
HEIGHT	300 mm (Nominal)
DIAMETER	100 mm
CAPACITY	1500 ml
(Material of Construction)	ORDER CODE
STAINLESS STEEL	440100

OPERATIONS : Due to its weight the Sampler sinks in the product and collects Samples after getting in contact with a hard surface/or touching bottom. When the sampler is raised for lifting, the valve closes trapping the sampled liquid within. This trapped liquid is then collected into sampling containers.

Uses- For obtaining bottom samples of heavy oils and molasses from ship/shore/lorry/wagon tanks. This sampler is mainly useful for drawing samples from heavy viscous liquids e.g. LSHS, molasses etc.

Maintenance: This sampler can be dismantled into 3 pieces. All the 3 pieces are threaded and joined together. The sampler must be cleaned, washed, rinsed after each use to prevent contamination with next product. Special care is to be taken for the valve/and valve seat. Do not damage the same when cleaning.

USES: To get composite/core sample of the liquid product from Ship/Shore tanks.

MAINTENANCE: After every operation see that the Sampler is cleaned, washed, rinsed properly.

BOTTLE TYPE SAMPLER



SPECIFICATIONS

MODEL	LS-BT-01	LS-BT-02
HEIGHT	300mm (Nominal)	150 mm
DIAMETER	75mm	75 mm
CAPACITY	1000ml	500 ml

(Material of Construction)

ORDER CODE

STAINLESS STEEL	550600	550602
BRASS	550610	550612
COPPER	550620	550622
OTHER THAN ABOVE	550630	550632

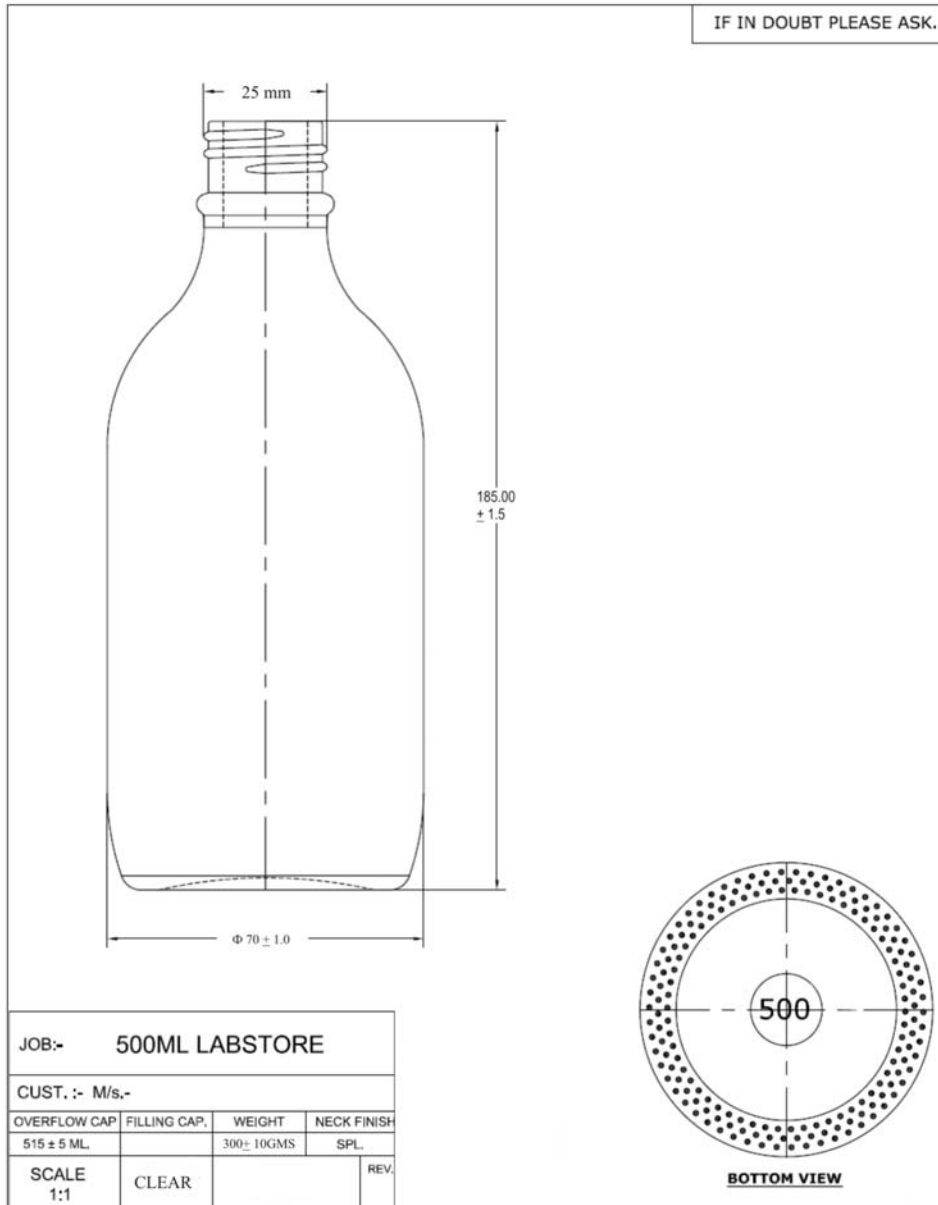
OPERATIONS: Before lowering the Sampler inside a tank, ensure that the Cork is fitted tightly on the mouth of the sampler. As the Sampler touches the bottom pull the cork up and simultaneously pull the Sampler up in such a speed that it fills only 80% of its capacity till it comes out in this way you get core sample of the product.

USES: To get composite/core sample of the liquid product from Ship / Shore tanks.

MAINTENANCE: After every operation see that the Sampler and the cork is cleaned, washed, rinsed properly.

**Dimensions
Clear Bottle-500ml**

IF IN DOUBT PLEASE ASK.

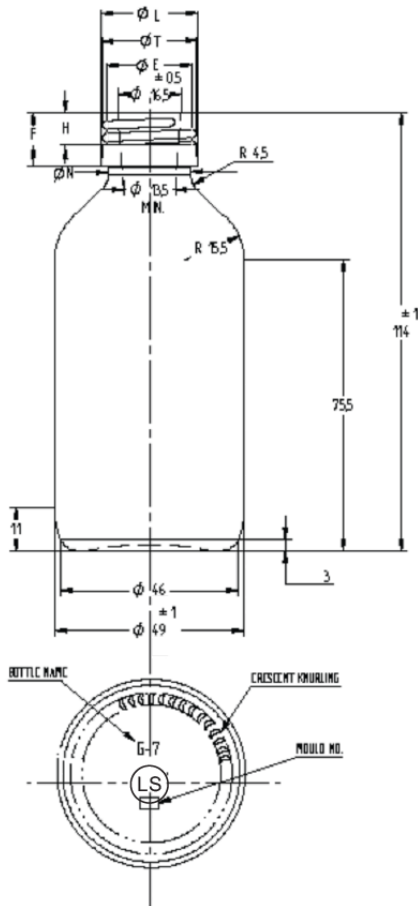


Clear Bottle-500ml



Glass Bottle - 100 ml (Amber)

Dimensions

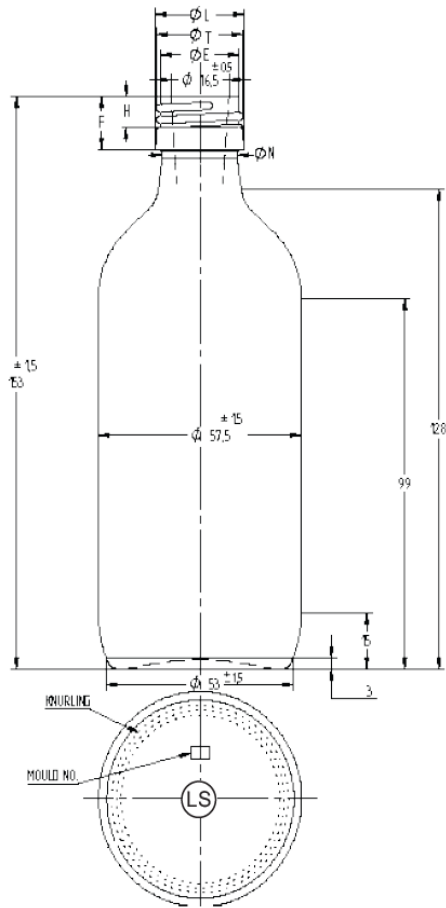


Product Details

Neck Size	25 mm
Overflow Capacity	129 ml
Overall Height	114 mm
Body Diameter	49 mm

Glass Bottle - 200 ml (Amber)

Dimensions



Product Details

Neck Size	25 mm
Overflow Capacity	237 ml
Overall Height	153 mm
Body Diameter	53 mm



Sealing Wire



Sampling Cans
(UN Approved)



Sampling Bomb



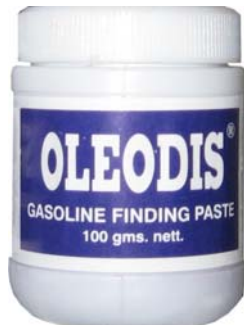
Seamless Bladder for Gas Sampling

Sealing Wire - Spiral & available in Kgs.

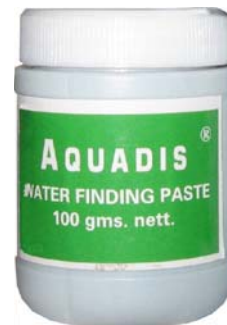
Sampling Cans - Available in 125, 250, 300, 500, 1000, 2500, 3000, 4000, 5000, 6000, 10000, 11000, 20000, 25000, 30000ML (Rectangular & Cylindrical Shape). UN Approved

Sampling Bomb - Available in 450ML & 1000ML Capacity with swagelok valves.

Sampling Bladder - Seamless, Size No: 5.



Oil Finding Paste



Water Finding Paste



Dip Tape



Dip Rod

Oil / Water Finding Paste - Available in 100gms Jars.

Dip tapes - Available in 10, 15, 20, 25, 30, 50 mtr length.

- (a) Stainless Steel tape + 6 inches tapered Stainless Steel bob.
- (b) Stainless Steel tape + 6 inches Tapered Brass bob.
- (c) CS tape + 6 inches Tapered Brass bob.

Dip Rods - Made of Aluminium with Brass tip & graduations & available in 1, 2, 3 & 4 mtrs length.



P.O.Box # 4729 Antioch,California - 94531 United States of America
E-mail: admin@labstore-instruments.com ♦ Website: www.labstore-instruments.com
Tel. (USA): +1 (925) 219-8586